

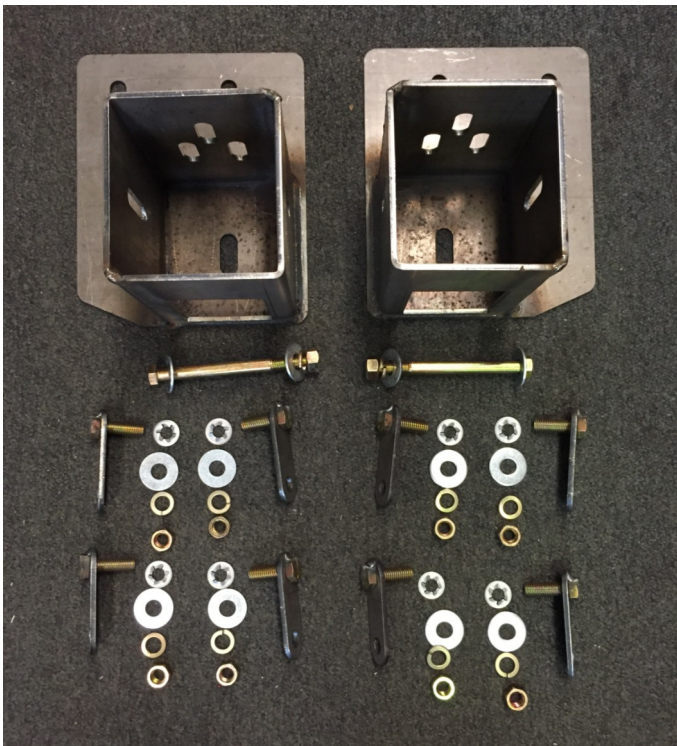


2011-2016 Ford F250, F350, F450 F550 Installation Instructions

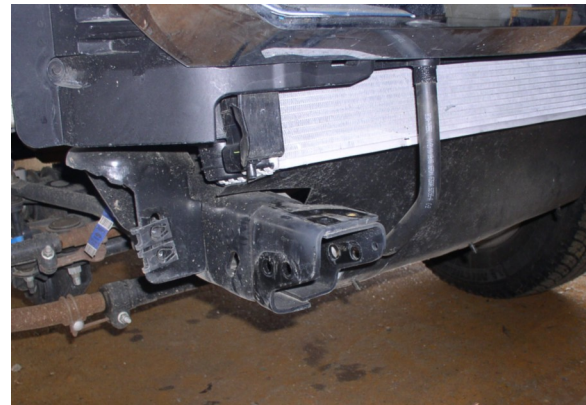
Item NO.	Hardware List	Quantity
1	Frame Mount Brackets	2
2	Single Bolt Plates	8
3	Galvanized Keepers	8
4	Flat Washers	12
5	Locker Washers	10
6	Nuts	10
7	5 1/2" Bolts	2
8	Winch Ready Billets	1 Set

Driver Side

Passanger Side



1. Start by Removing Stock Bumper and tow hooks. Leaving the Frame Horn with nothing on it See Picture below



2. Now you will prep the Tow hook cut the hook off with a cut wheel saving the 3 bolt plate . See View A

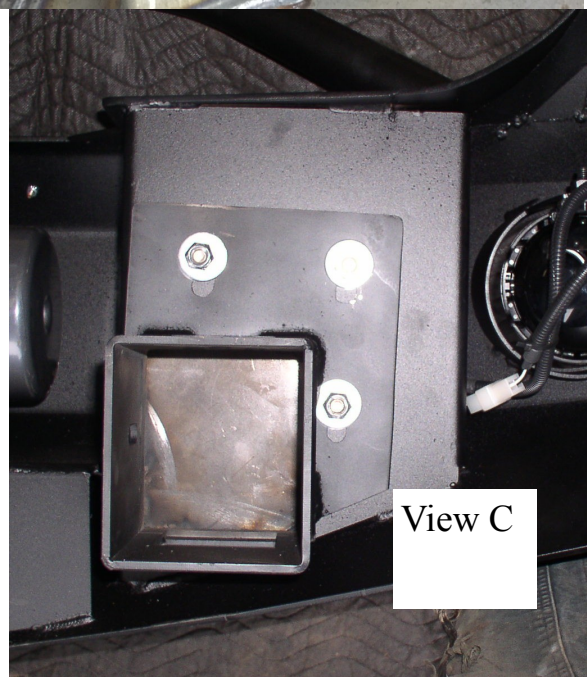
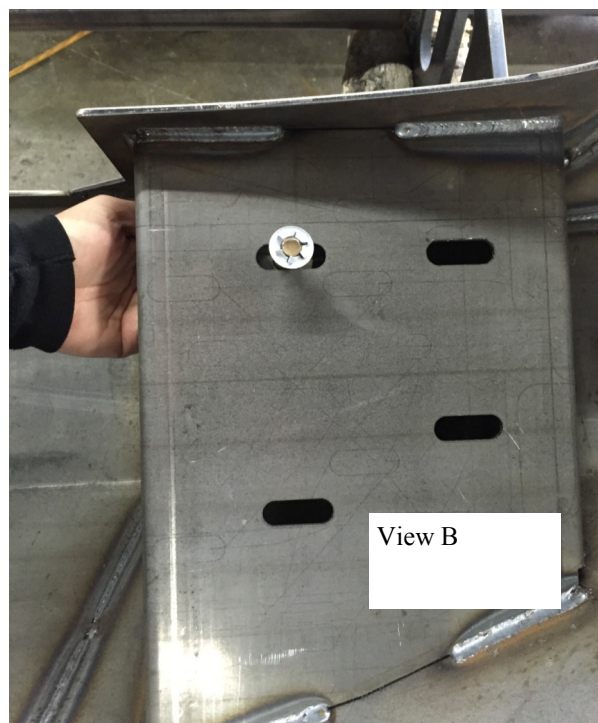


3. Now you install the bolt plates coming through the back of the bumper mount, with the bolt threads showing you push the keepers on with a socket holding the bolt plate firmly from the backside of bumper mount it will hold the bolt plate in position. Repeat for all other bolt plates See View B

4 Now you will install the Frame mount bracket to the face of the bumper mount see view

5. Apply the Frame brackets to the inner bumper mount with flat washers, lock washers and nuts. as pictured in View C slightly tighten enough that the frame bracket will move up and down and side to side. You will want to install your winch and lighting at this time. See Winch Instructions

6. Now you are ready to mount bumper to frame horn. Slide the brackets over the frame aligning bracket wholes with frame-bracket (sometime the outer wholes don't line up exactly so you have to drimel the whole out to allow the through bolt to go through). Now install the OEM 3 nut plate to the top of the bracket. You will want to adjust in and out adjustment and tighten the OEM factory bolts up through the bottom of bracket through Frame. Slide the bolt through the frame horn wholes, use flat washers, lock washers, and nuts and tighten. You will have up and down and side to side adjustment when you tighten the bracket to the bumper mount.



7. You might want to tack weld the brackets in place and to the frame to insure no movement.

9. Trim the wheel well and tuck in to the back of the end cap to the bumper