

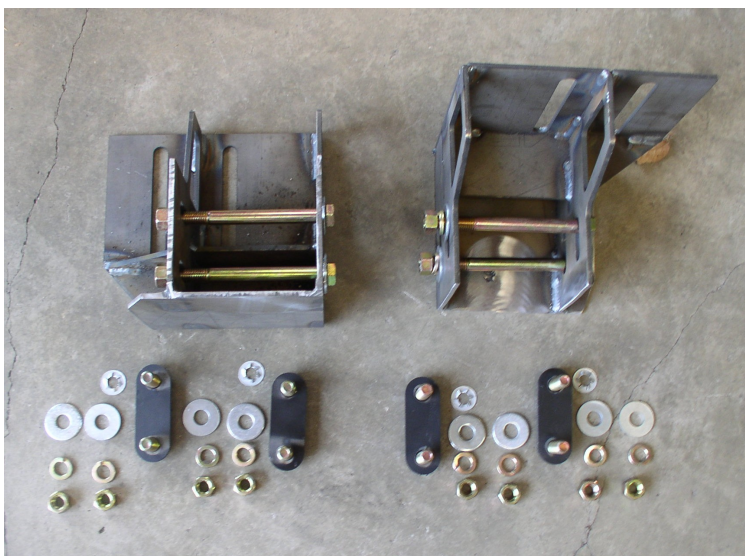


2003-2007 Chevy 1500 2000-2007 GMC 1500 Installation Instructions

Item NO.	Hardware List	Quantity
1	Frame Mount Brackets	2
2	Double Plate	16
3	Galvanized Keepers	4
4	Flat Washers	16
5	Lock Washers	12
6	Nuts	16
7	Winch Ready Billets	1 Set
9	6 1/2 " Bolts	4

Driver Side

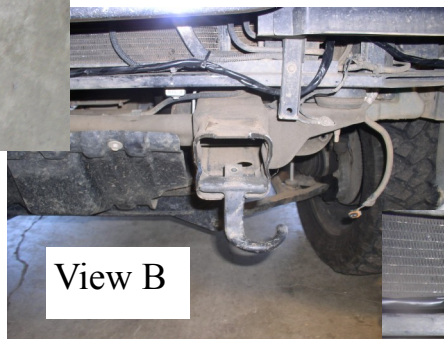
Passanger Side



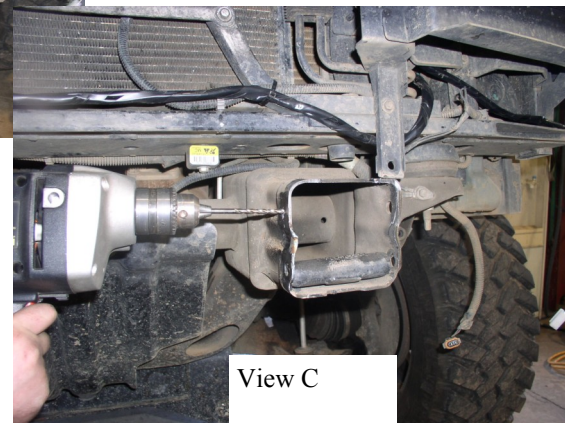
1. Start by Removing Stock Bumper and tow hooks.
2. Now you will prep the frame horn. Using a cut wheel you need to cut the frame horn flush with the mounting bracket . See View A
3. Unbolt tow hook See View B Drill out upper bolt whole See View C



View A



View B



View C

4. Remove Plastic underneath headlight. See View D

5. Install the Double bolt plate, slide the bolt plate through the back of inner bumper mount . Use a deep socket and push the keepers over the bolt to keep it from dropping out the back of inner bracket.. See View E

6. Apply the Frame brackets to the inner bumper mount with flat washers, lock washers and nuts. as pictured in View F slightly tighten enough that the frame bracket will move up and down and side to side. You will want to install your winch at this time. See Winch Instructions

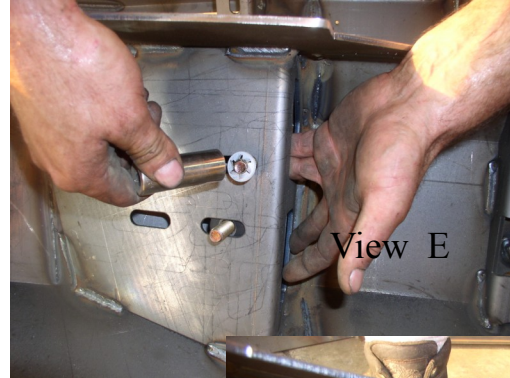
7. Now you are ready to mount bumper to frame horn. Slide the brackets over the frame aligning bracket wholes with frame-bracket. Slide the bolt through frame horn wholes , use flat washers, lock washers and nuts to slightly tighten . Install OEM bolt up through bottom of bracket through frame See View G You will have up and down and side to side adjustment. When you have it in adjustment tighten all bolts with a impact wrench. See View H

8. You might want to tack weld the brackets in place and to the frame to insure no movement.

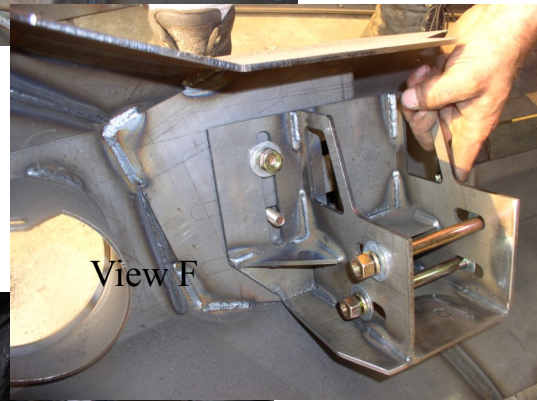
9. Trim the wheel well and tuck in to the back of the end cap to the bumper



View D



View E



View F



View G



View H