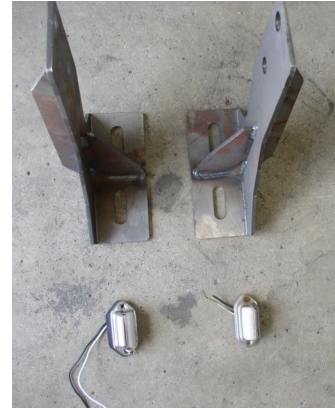
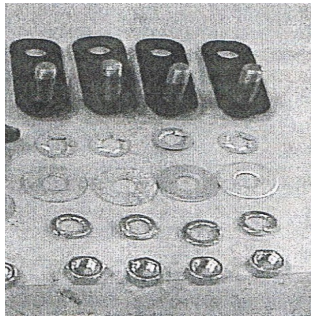


1999-2011 Ford Super duty Rear Bumper

List of Hardware

- 4- Single Bolt Plates
- 4- Keepers
- 4- Flat Washers
- 4- Locker Washers
- 4-nuts
- Use Stock Hardware To frame
- Set of Frame Brackets



- Install the Single bolt plates going through the inner bumper mount with keepers to keep it from coming out back apply bracket in the up position, with flat washers, lock washers and nuts, don't tighten down leave slightly loose so you have some up , down side to side adjustment. Bracket will install to the outside of frame horn as pictured below.
- Use Stock hardware to attach to frame horn in some cases you have to make bolt wholes slotted. Make sure when Adjusting the bumper you check tail Gate opening and closing
- Apply License Plate Lights to wholes See picture below wire to factory wiring

