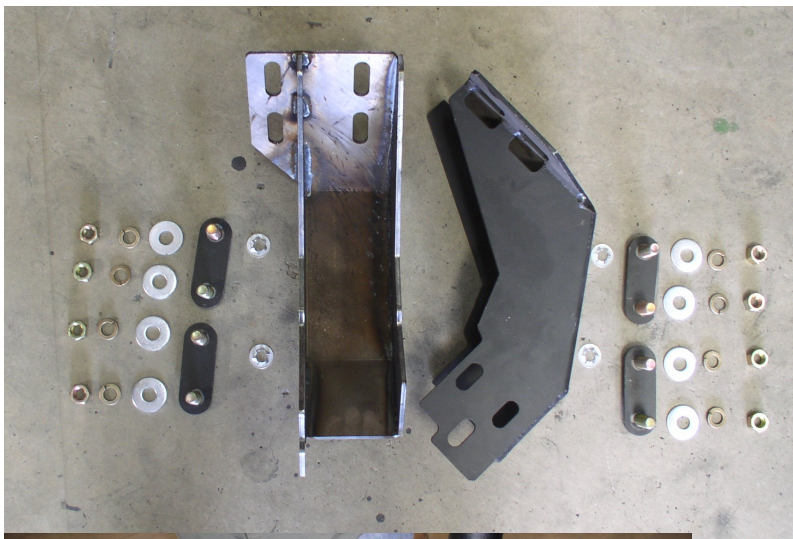




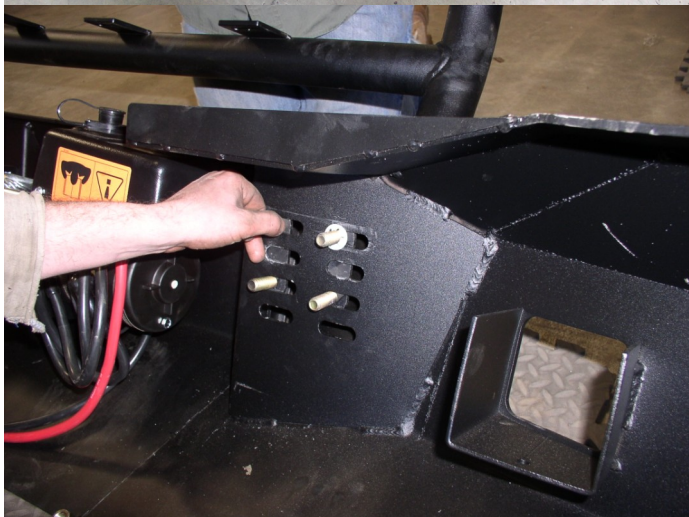
## 1994-1996 Dodge 1500-2500-3500 Installation Instructions

Item NO.	Hardware List	Quantity
1	Frame Mount Brackets	2
2	Double Bolts	4
3	Galvanized Keepers	4
4	Flat Washers	8
5	Lock Washers	8
6	Nuts	8
7	Winch Ready Billets	1 Set

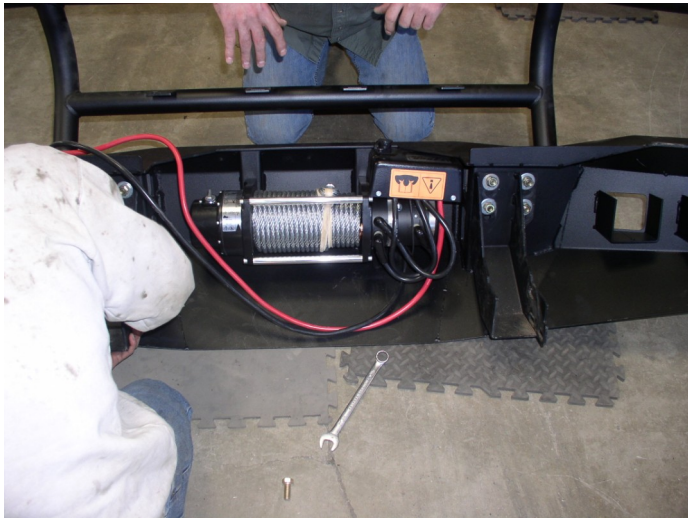
**Driver Side**                      **Passanger Side**



**1. Start by Removing Stock Bumper and tow hooks. Install Winch in face of bumper**



**2. Install Double Bolt Plates to the inner bumper mount thru back side wholes provided, securing them with retaining keepers. Then attach frame mount bracket to bolts coming thru with Flat washers, lock wash-ers and nuts. Don't tighten down you need them to have some adjust-ment.**



**3. Then attach frame mount bracket to bolts coming thru with Flat washers, lock washers and nuts. Don't tighten down you need them to have some adjustment.**



**4. Measure distance between brackets and distance between frame. Then adjust the frame bracket to measurement. Then insert frame bracket into frame horn. Use Stock hardware through frame and mounting bracket. Align the bumper to desired adjustment. Tighten up all your bolts.**

